



EQuIS Data Processor (EDP)

For years, EarthSoft's Electronic Lab Data Checker (ELDC) has been an industry standard for checking laboratory analytical deliverables. Over 75 labs in the US now have the ELDC. Staff expertise, varying EDD formats, and the type and sophistication of LIMS systems within the laboratory community are all factors that can work against accurate and seamless delivery of EDDs. By assisting laboratories and data providers in preparing EDDs, ELDC has increased accuracy and efficiency of data submissions while reducing costs. Now EarthSoft introduces the EQuIS Data Processor (EDP). While retaining the simplicity and ease of use ELDC users are familiar with, EDP adds new features and capabilities that make the checking of electronic deliverables more secure, complete, and cost-effective than ever before.

EDP checks the following problematic data deliverable issues:

- Required Fields
- Field Lengths
- Data Type
- Valid Dates
- Reference Values
- Duplicate Rows
- Range Checking
- Relationship Checking
- Required Values

Comprehensive Format List

EDP supports formats for all facets of environmental data acquisition, both field and laboratory observation. From borehole drilling to comprehensive analytical results with QA/QC, data may be checked quickly and easily. EDP supports many EDD formats published by EarthSoft and others including the '4-File' format, the Geo3EDD, the EPA Region 5 EDD, SEDD, ERPIMS, NEDD, NEDTS, and the National/Multimedia EDD. Additional formats may be added, as needed in the XML format file structure.

Interactive Error Correction

Instead of simply checking an EDD and providing an error report, EDP allows you to correct errors on-the-fly without having to go into a separate text or document editor. Reference value errors are fixed by simply selecting the appropriate value from a dropdown list. Quality assurance concerns about editing of electronic files are satisfied with the edit tracking audit files. All edits to original files may be tracked and the original file, final file, error listing, and edit listing saved to a secure folder for archival and verification. Additionally, edit capability can be restricted to only selected users or disabled entirely when preferred.

Integration with EQuIS

Approved reference value (valid value, lookup) lists exported from EQuIS by data managers may be converted directly to the XML format used by EDP.

Custom Checking

As well as simple data integrity concerns such as parent/child relationships, reference values, and valid dates and data types, EDP supports custom checking algorithms. Custom checking may include complex or project-specific logic such as:

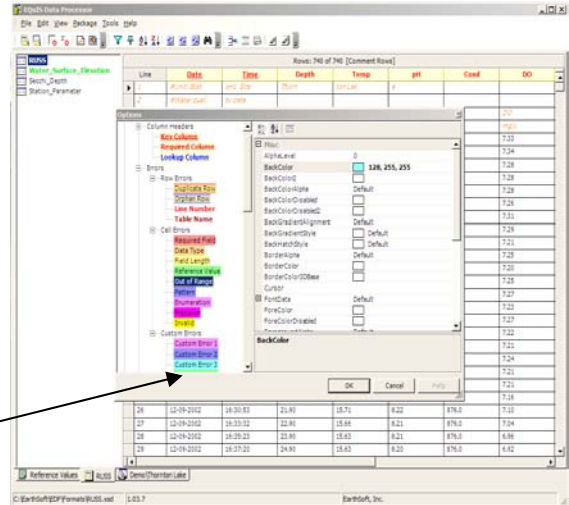
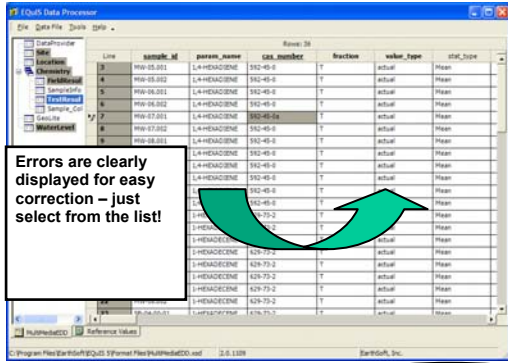
- Non-detects: if detect_flag = N, the reporting_detection_limit field must be populated
- Populate the interpreted_qualifier field with the lab_qualifier field values
- Conditional checking (if the value of field 1 is "X" then the value of field2 must be "Y")

Check Multiple EDD files simultaneously

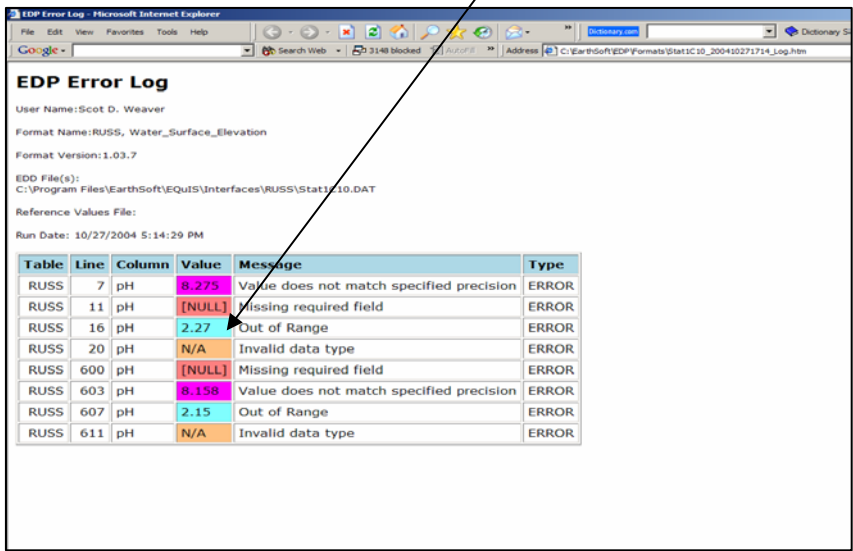
No longer are data submitters required to save all EDDs to tab or comma-delimited text files. EDP supports automated checking of complete Excel files. EDDs may include several different populated "formats" in a single Excel EDD, such as Location, Lithology, Geologic Sample, etc. Where tabs in the Excel workbook are named the same as the EDD format, the worksheets will be loaded and checked simultaneously. Alternatively, multiple text files may be organized together and managed as a single package for checking and processing.

EDD Submittals

The EDP will also provide for customized generation of the submittal package that will include the checked EDD data files, the required file tags and email formatting and will manage the submitter IDs for specific automated submittal file transfers. EDP also provides the functionality needed to manage data files directly in XML.



EDP allows you to color code your errors to let them stand out.



Let EDP whip YOUR data into shape!



Enterprise EDP EDD Automated Workflow

Enterprise EDP is a server-side automated workflow application for high volume shops that may process thousands or more EDDs per month. When combined with EDP, Enterprise EDP provides a full, closed loop EDD processing subsystem capable of off-site, off-line checking as well as on-line checking. This combination allows your data submitters to check their data prior to submission in the security of their system, and allows you to process a large number of EDDs automatically, without human involvement.

Enterprise EDP is written in Java and VB.NET and is multi-user and multi-channel. Web portals, email systems with POP3 and SMTP support including Lotus Notes, and ftp sites are supported as import and export channels.

Several US states and EPA Regions are implementing Enterprise EDP along with Distribution Licenses of EDP to manage their large electronic data submission programs.

